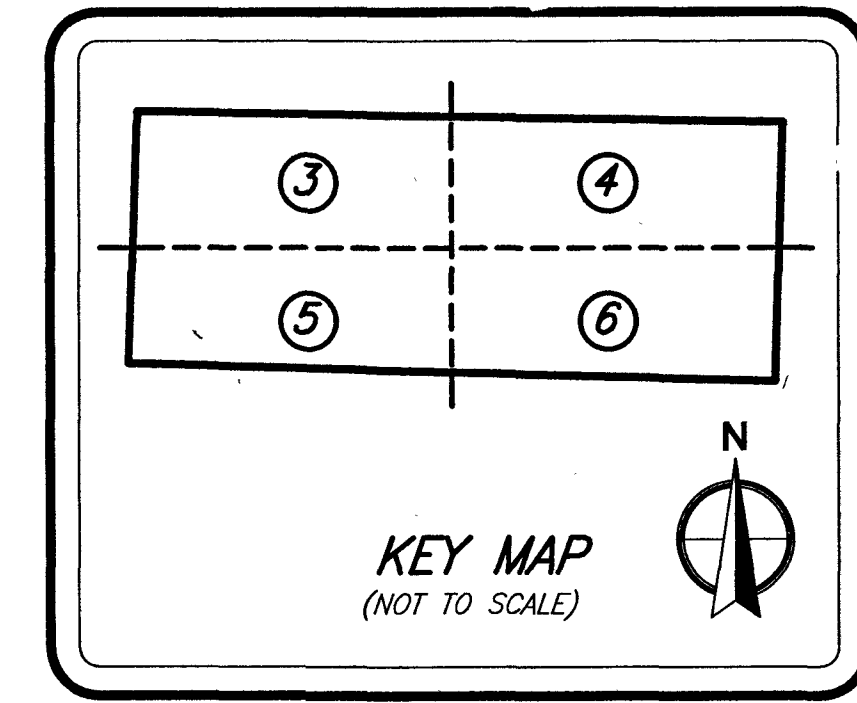
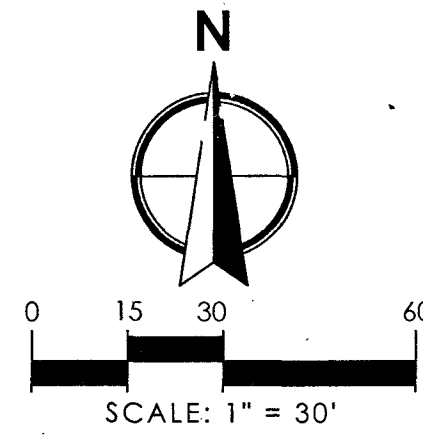


VINTAGE OAKS T1

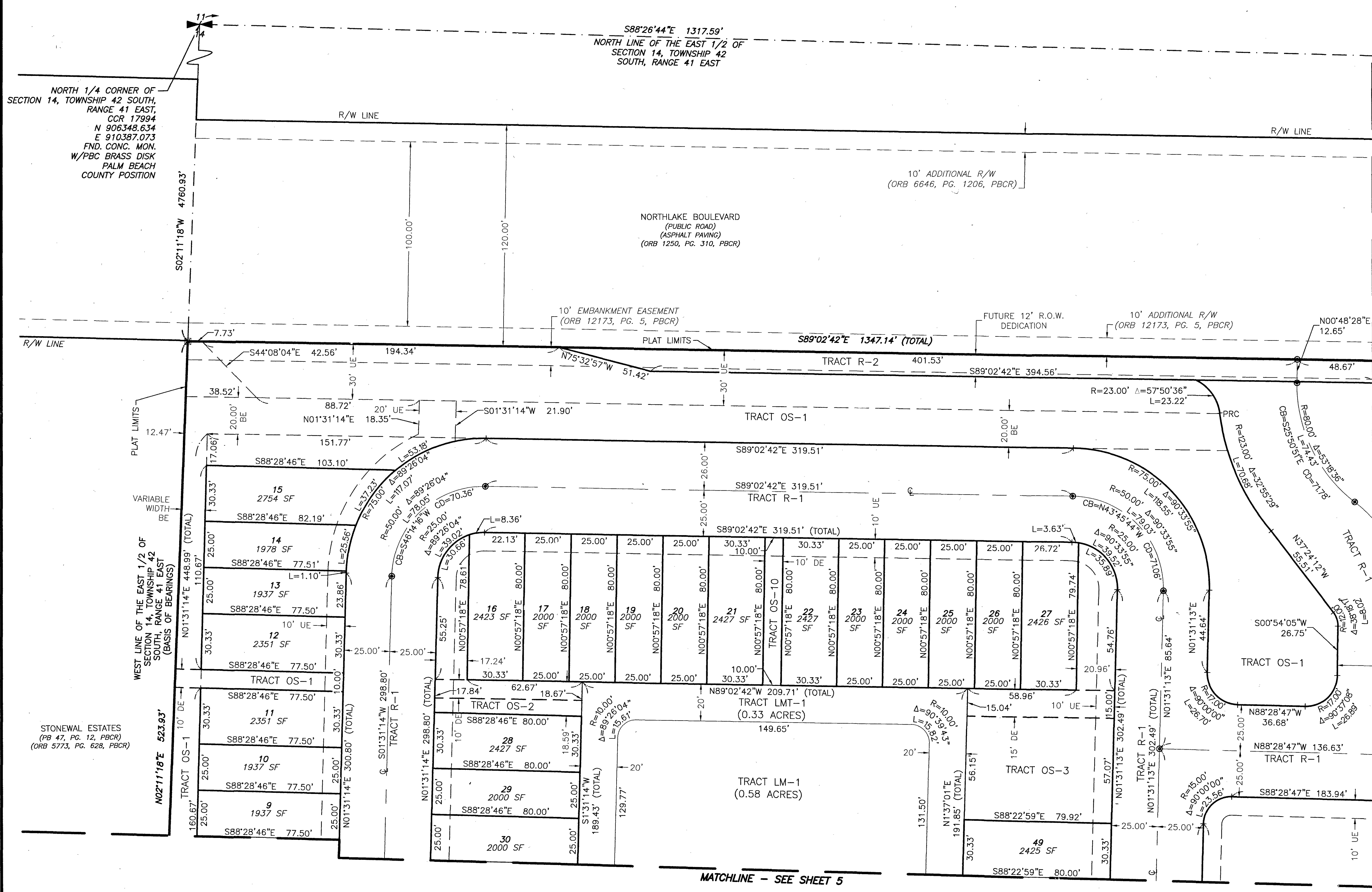
LOCATED IN SECTION 14, TOWNSHIP 42 SOUTH, RANGE 41 EAST
CITY OF PALM BEACH GARDENS
PALM BEACH COUNTY, FLORIDA

APRIL 2024



134

SHEET 3 OF 6 SHEETS



LEGEND

- BE = Buffer Easement
- C/L = Center Line
- CCR = Certified Corner Record
- CONC. = Concrete
- CB = Chord Bearing
- CD = Chord Distance
- Δ = Delta (Central Angle)
- DE = Drainage Easement
- FND. = Found
- L = Length of Arc
- LMT = Lake Maintenance Tract
- LSE = Lift Station Easement
- NAD = North American Datum
- ORB = Official Records Book
- ⊙ = Permanent Control Point (PCP)
- PBCR = Palm Beach County Records
- PG. = Page
- PB = Plat Book
- POB = Point of Beginning
- POC = Point of Commencement
- PRC = Point of Reverse Curvature
- PRM = Permanent Reference Monument
- R = Radius
- R/W = Right-of-Way
- SF = Square Feet
- UE = Utility Easement
- ⊗ = Set 4"x4" Concrete (PRM) W/Aluminum Disc Stamped "LB 7055 PRM"

TRACT AREA TABULATION	
TRACT	AREA (S.F.)
LM-1	25,447
LM-2	30,181
LMT-1	14,499
LMT-2	16,932
LST	1,500
OS-1	129,772
OS-2	2,690
OS-3	7,284
OS-4	2,374
OS-5	2,018
OS-6	4,280
OS-7	3,200
OS-8	1,664
OS-9	1,817
OS-10	800
OS-11	800
OS-12	800
OS-13	800
R-1	188,973
R-2	5,054
RA-1	34,525



2035 Vista Parkway, West Palm Beach, FL 33411
Phone No. 866.909.2220 www.wginc.com
Cert No. 6091 - LB No. 7055
THIS INSTRUMENT WAS PREPARED BY KELSEY M. SMITH
P.S.M., PROFESSIONAL SURVEYOR AND MAPPER,
LICENSE NO. 7096 FOR THE FIRM: WGI, INC.